



# Strand Woven Bamboo Eco-Decking

## BESTCO 100% bamboo out-door use

Bamboo is a planted and fast growing, environmentally sound resources. Strand woven bamboo decking is made from 100% solide bamboo strips undergo lamination to realise the toughest struncture combination with phenolic glue. The technical thermo treatment make it suitable for out-door decking application with great anti-corrosion and fire resistance features. The vapor carbination makes sugar and starch removed from bamboo fiber. The treatment with natural borate and hydrogen peroxide eliminate pests and mildew. Finishing with a waterproof oil, Strand Woven bamboo decking is waterproof, fireproof, sun proof and rot proof. The production process of heavy bamboo decking achieves the highest durability more stable than any tropical hardwood and therefore can be produced with head side tongue and groove connection meeting the concerned European mormes.



- Hardness
- Green Eco-freindship enviromental
- Anti-termite and anti-mold
- Good dimension stability
- Fir proof - Anti slippery
- Wetherbility



bamboo keel  
4 sides flat /PPG oil  
2500X40X40mm

Size	1860X140X18/20mm, 2500X140X18/20mm,	Color	Carbonized Medium and Dark
Material	100% nature bamboo, surfaces can be oiled.	Rib Design	Big rib, Fine rib for face, 4 sides tongue and groove connection
Density	≧ 1.2g/cm3	Advantage	Easy installtion, small gaps between blocks only 6mm.



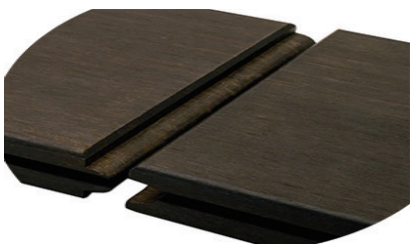
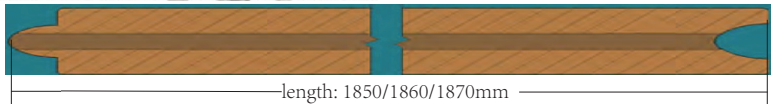
Small wave



Big wave



Small groove



Tangue & groove end matching system

- Our tongue-and-groove end-matching system:
- Demensionally stable that won't attrack mold and mildew.
  - No shrinkage or expansion, no deck joist need.
  - Sound absorption and reverberation controlling.
  - Easy maintenance.
  - More durable and low themal conductivity.





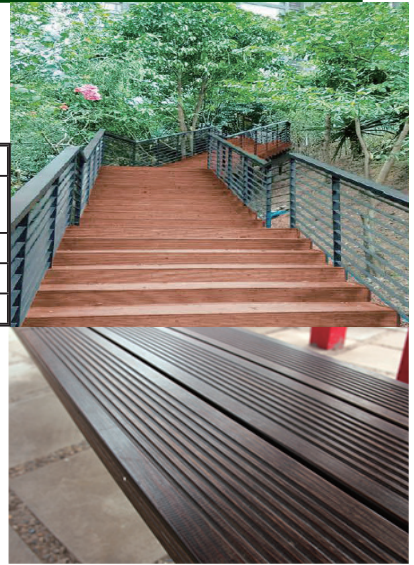
# StrandWoven Bamboo Eco-Decking

## BESTCO 100% bamboo out-door use



Test contract: EPH-Laboratory Surface Testing  
 Material: Bamboo decking deep carbonized, thickness: 20mm  
 Tested according to EN ISO 9239-1, EN ISO 11925-2, EN1534 and EN 408  
 Applicable surfaces(top/botton side) flat (Var.1) abd grooved (Var.2)

Test Items	Standard acc. to	Results	declaration
1 Reaction to fire performance	EN ISO 9239-1:2010 EN ISO11925-2: 2011	11.02kW 0.2% min	Bfl-sl EN ISO 13501-2
2 Static indentation (Brinell hardness)	EN 1534:2011	107N/mm <sup>2</sup>	-
3 Bending strenght (mean value)	EN 408:2012	87N/mm <sup>2</sup>	-
4 Modulus of Elasticity in Bending	EN 408: 2012	18700N/mm <sup>2</sup>	-



Tests Fungi - three brown rot fungi and two white fungi tested by RISE  
 Testing was performed according to standard ENV 12038:2002  
 Test material: Bamboo Medium Carbonized

Conclusions from testing according to ENV 807 :

Durability Class 1(very duarable), suitable for Use class 4 acc. to ENV807/EN 350

Test material: Bamboo Deep Carbonized

Conclusions from testing according to ENV 807:

Durability Class 1 (Very durable), suitable for Use class 4 acc. to ENV 807/EN350



Friction tested by Intertek acc. to CEN/TS 16165:2012 Annex C  
 Dry condition: longitudinal direction 83, horizontal direction 86  
 Wet condition : longitudinal direction 57, horizontal direction 53

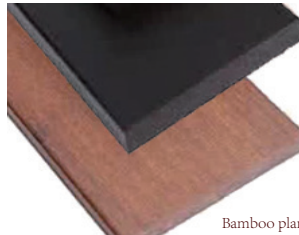
Slip resistance prformance tested by Intertek  
 accorcding. to DIN 51130:2014  
 Conclusion: Angle: 16.8° Rating: R 10



Horse Plank  
 Size: 1250(L)X140(W)X30(T)mm  
 Color: Brwon / Dark brwon  
 Density: 1200kg/m<sup>3</sup>



Outdoor use cladding  
 T&G length sides  
 PPG oiled surface treatment  
 Specification: 1860X140X12mm



Bamboo plank  
 Lengt: 1860/1850mm  
 Width: 140/100/60/40mm  
 Thickness: 30/40mm  
 Surface: Flat, Oiled



Outdoor used decking for DIY market  
 Surface flat + plastic based  
 PPG oiled surface treatment  
 Specification: 300X300X14mm

